

Guidelines for long-term care: The chance for cross-pollination?

B.C.F.M. van Glansbeek-Schutijser, PhD, T.I. Mol, PhD
A.L. Dutmer, PhD, F.A. van den Driessen Mareeuw, PhD
b.schutijser@skilz.nu | www.skilz.nu

MULTIDISCIPLINARY
GUIDELINES

Background

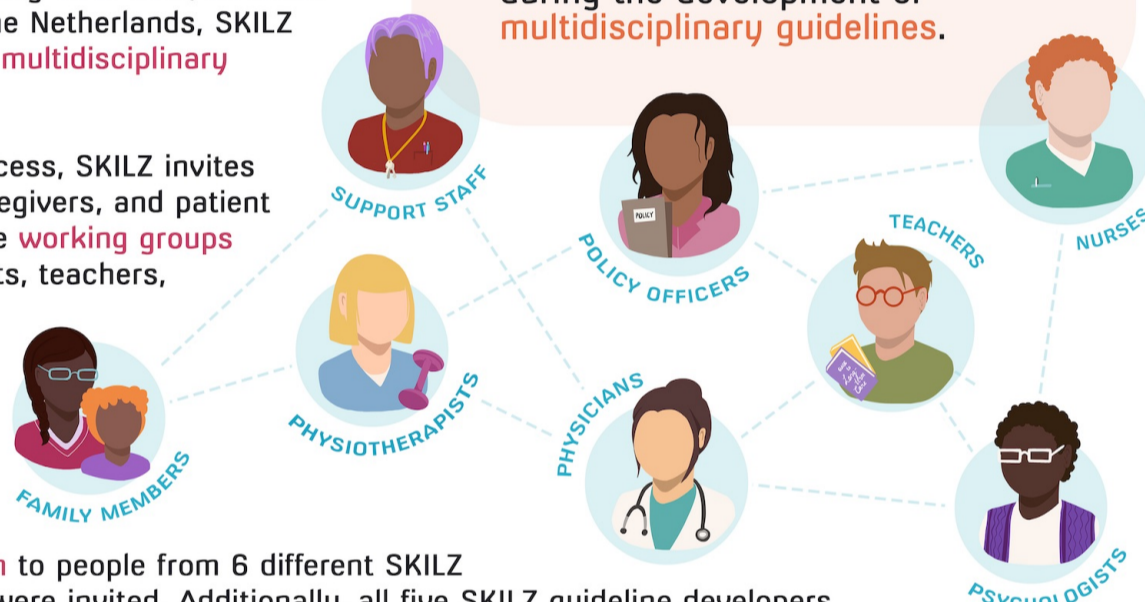
Long-term care is focused on **promoting or maintaining quality of life**, rather than curing a disease. It is therefore often intensive and permanent. Long-term care involves a **variety of informal caregivers and healthcare professionals**.

In the development of guidelines for long-term care, all these stakeholders should be involved. In the Netherlands, SKILZ coordinates the development of such **multidisciplinary guidelines** for long-term care.

During the guideline development process, SKILZ invites healthcare professionals, informal caregivers, and patient representatives to partake in guideline **working groups** (e.g., physicians, nurses, psychologists, teachers, parents, policy officers). These stakeholders are from a range of different settings, allowing for **cross-pollination**.

Objective

To provide **insight into outcomes and challenges** of cross-pollination between long-term care settings during the development of **multidisciplinary guidelines**.



Methods

We sent out an **online evaluation form** to people from 6 different SKILZ guideline working groups. **67 people** were invited. Additionally, all five SKILZ guideline developers were asked about how they experienced the process and cross-pollination.

Results

Outcomes: +

- **Similar constraints** in different settings.
- Recommendations applicable to different settings.
- **Mutual respect** for each other's knowledge and experiences.
- Others' perspectives lead to **new insights** into own field.
- Multidisciplinary working leads to **better guidelines**.

Challenges: -

- Difficult to find **representatives** of all stakeholders.
- Being a representative is a **big responsibility**.
- **Misunderstandings** within working group.
- The guideline must deal with **different terminologies** or interpretations.
 - No room for **patient group-specific recommendations**.

Future Prospects

- Multidisciplinary guideline development has led to **positive experiences and highly valued guidelines**.
- SKILZ continues to **maximize cross-pollination** by informing working group members about potential challenges and by searching for new methods to support all working group members to share all their valuable knowledge.

- "You must always bear in mind the different backgrounds of the users of the guideline (and the different interpretations they may have)."

+ "Perspectives of the group members from the care for people with intellectual disabilities taught me a lot about my own work in elderly care."

+ "An already available blueprint for advanced care planning in elderly care appeared to be also applicable to care for people with intellectual disability."

- "It's a big responsibility, especially when you are assigned by your professional association and addressed by colleagues on particular texts."

- "The guidelines are generic and do not address specific patient groups, some potential users expected specified recommendations."